

# **College Recommendation System**

## **Submitted By**

**NAME:** AJIT KUMAR SINGH  
**ROLL NO. :** 203144-21-0039  
**REG. NO. :** 144-1111-0350-20

**NAME:** AVINASH JHA  
**ROLL NO. :** 203144-21-0034  
**REG. NO. :** 144-1111-0344-20

**NAME:** MD KAUSAR  
**ROLL NO. :** 203144-21-0042  
**REG. NO. :** 144-1111-0353-20

## Table of Contents

1. Introduction .....	4
2. System Overview .....	5
3. Data Collection .....	6
4. User Interface .....	7
5. Implementation Details .....	10
6. Future Enhancements .....	11
7. Conclusion .....	12
8. Appendix .....	13
9. Acknowledgment .....	14

# **1. Introduction**

The College Recommendation System is a web-based application that assists high school students in finding suitable colleges and universities based on their career interests, and personal preferences. The system aims to streamline the college selection process by providing personalized and relevant college recommendations to each student.

## 2. System Overview

The system operates on a client-server architecture, where the server handles data processing and recommendations, while the client interacts with users through a web interface.

The key components of the system include:

**Student Profile Builder:** Collects student data, including career interests, and preferred location for college.

**College Data Aggregation:** Gathers comprehensive information about colleges and universities, including course offerings.

**Data Processing:** Cleans, filters, and transforms the raw data into a structured format suitable for recommendation.

**User Interface:** The web-based user interface allows students to input their details and to explore recommended colleges and access detailed college profiles.

### **3. Data Collection**

#### **Student Data Collection**

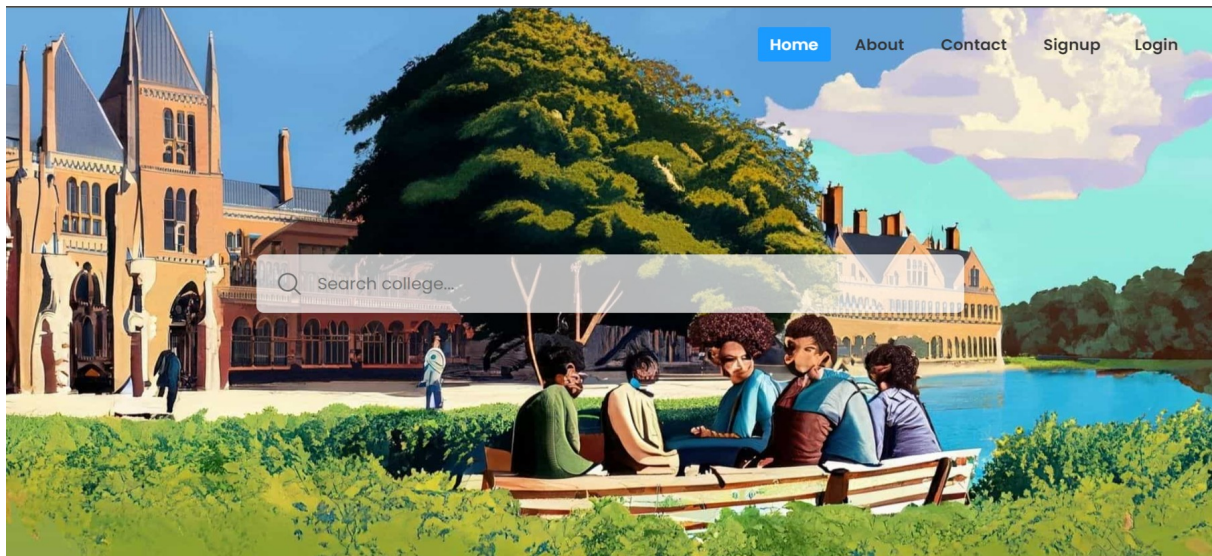
The College Recommendation System collects data from students during the registration and profile creation process and further adding career interests, and preferred location for college.

#### **College Data Collection**

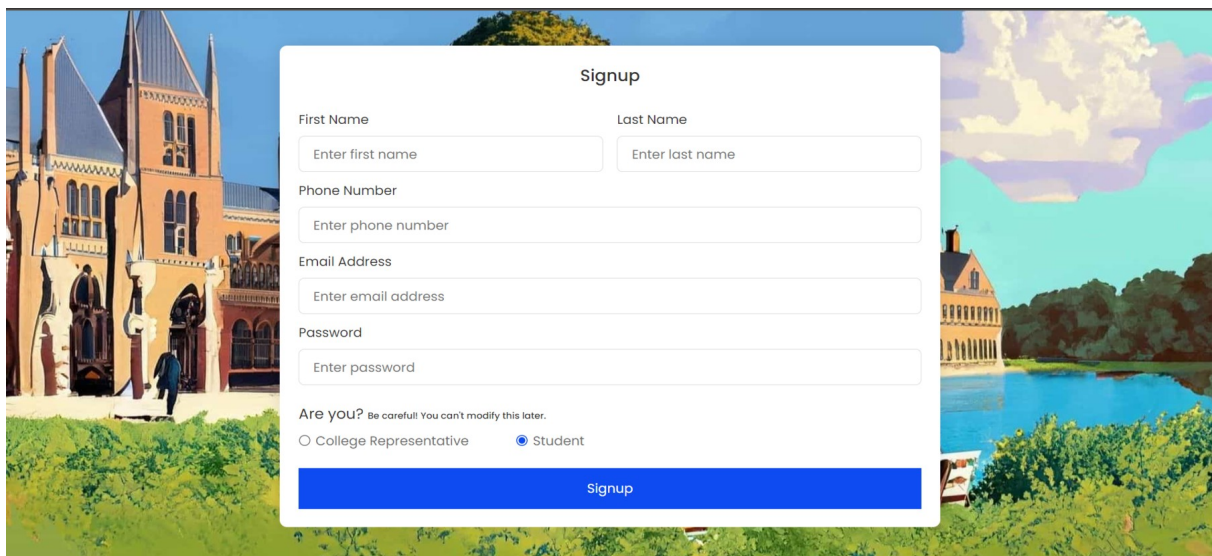
Comprehensive data about various colleges and universities are gathered from reliable sources, including official websites, and reputable educational institutions. Information such as contact details and course catalogs is collected. Colleges representative can claim their colleges via contacting us and can further customize their college details.

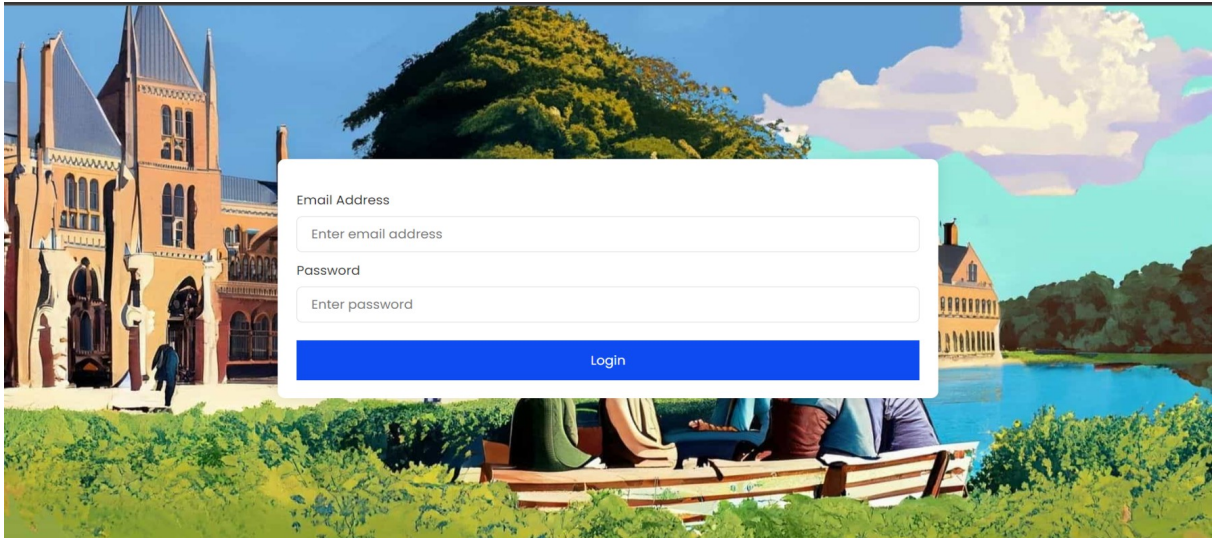
## 4. User Interface

The user interface offers a landing or home page where students can search colleges of interests.



The user interface offers a seamless registration and login process for students and colleges representative, ensuring secure access to their profiles.





## Student Profile Creation

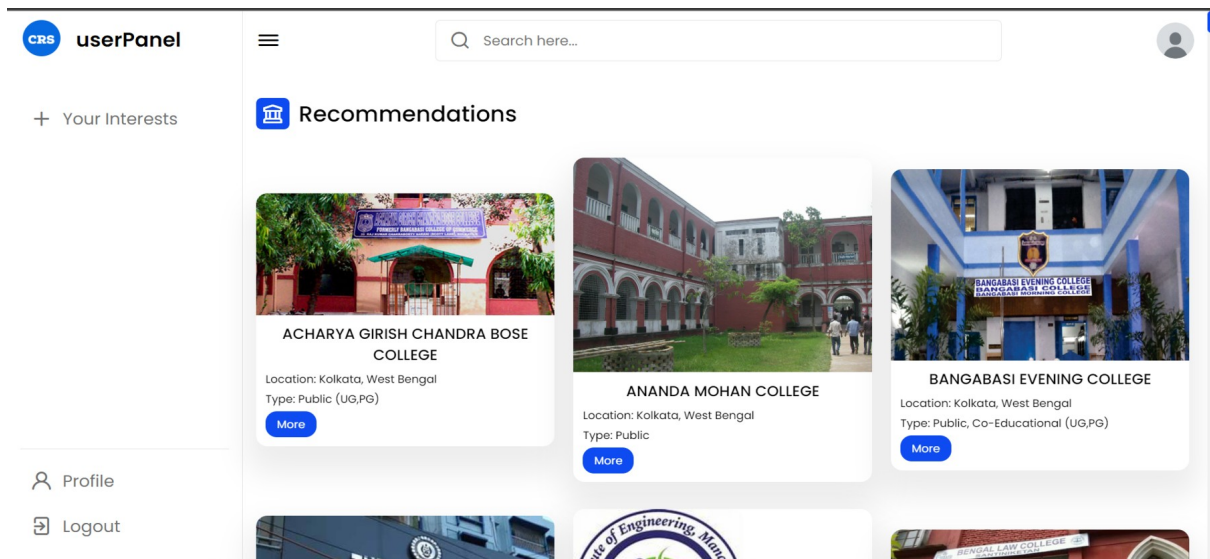
Students can create and update their profiles by providing career interests, and preferences for college location and major.

A screenshot of a user panel interface. The top left corner shows the 'CRS userPanel' logo. On the right, there is a user profile icon. Below the logo, there is a section titled '+ Your Interests'. The main content area features a text input field with the placeholder text 'Add a comma after each tag' and the example text 'computer science, b.sc. , kolkata'. A blue 'Submit' button is located at the bottom right of the input field. On the left side, there is a navigation menu with 'Profile' and 'Logout' options.



## College Search and Recommendations

Students can explore recommended colleges based on their profiles and preferences. The system displays relevant information about each recommended college.



The screenshot displays a user interface for a college search and recommendation system. The top left corner features a 'userPanel' header with a 'CRS' logo. Below this, there is a navigation menu with options for 'Your Interests', 'Profile', and 'Logout'. A search bar is located at the top right, labeled 'Search here...'. The main content area is titled 'Recommendations' and displays a grid of college cards. Each card includes a photograph of the college building, the college name, its location (Kolkata, West Bengal), and its type (Public, Co-Educational, UG, PG). A 'More' button is provided for each card to view additional details.

College Name	Location	Type
ACHARYA GIRISH CHANDRA BOSE COLLEGE	Kolkata, West Bengal	Public (UG,PG)
ANANDA MOHAN COLLEGE	Kolkata, West Bengal	Public
BANGABASI EVENING COLLEGE	Kolkata, West Bengal	Public, Co-Educational (UG,PG)

## **5. Implementation Details**

The system operates on a client-server architecture, where the server handles data processing and recommendations. HTML, CSS, JavaScript and jQuery web technologies have been used to design user interface which provides a seamless experience. On the back-end MySQL and PHP has been used to process request and deal with the recommendation system. The College Recommendation System can be deployed on a reliable and scalable cloud-based infrastructure for optimal performance and accessibility. A secure authentication mechanism is implemented to protect student data and privacy.

## **6. Future Enhancements**

To enhance the system's performance and user experience, the following features can be considered for future updates:

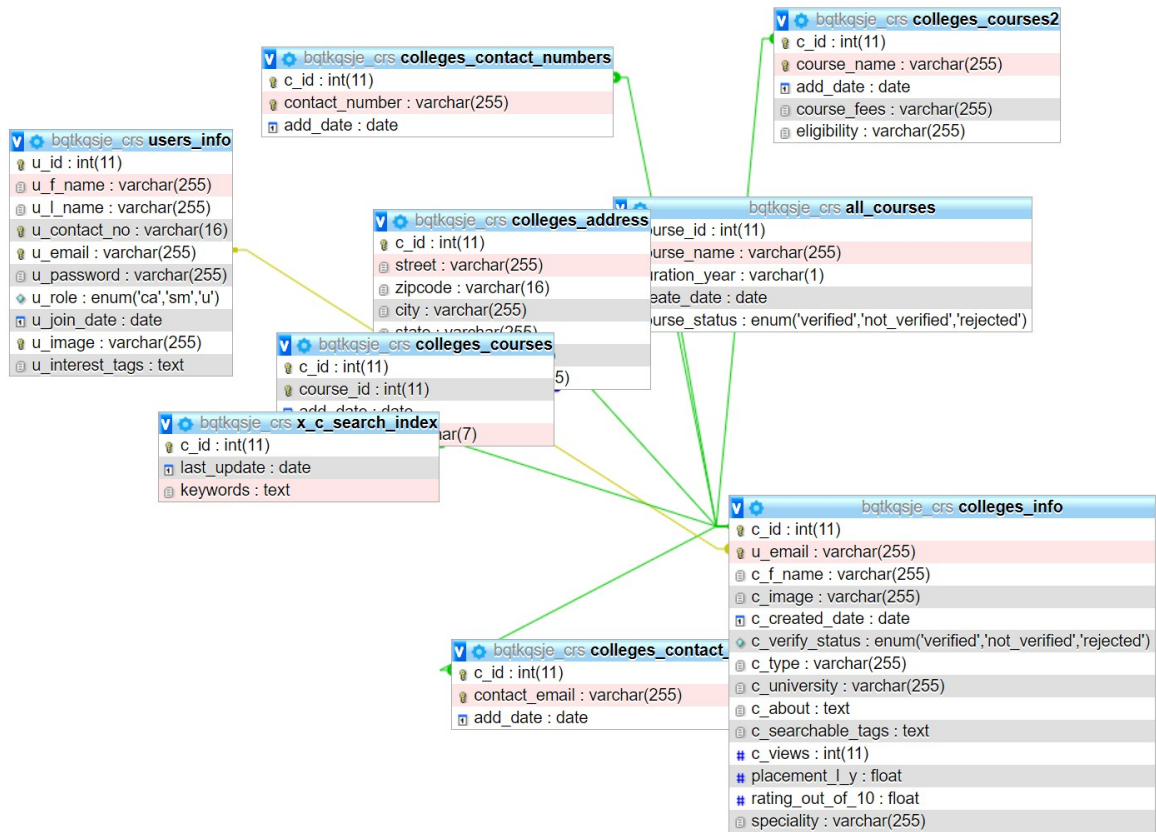
- Integration of real-time data from current college students to capture recent trends and student experiences.
- Incorporation of financial factors to recommend colleges based on students' financial constraints.
- Addition of career-specific recommendations for students interested in pursuing specific professions.
- Implementing an interactive chatbot for personalized guidance and support.

## **7. Conclusion**

The College Recommendation System aims to guide high school students in finding the best-fit colleges and universities based on their unique interests, and preferences. By employing cutting-edge recommendation and an intuitive user interface, the system empowers students to make well-informed decisions about their future education.

# 8. Appendix

## Data Schema



## 9. Acknowledgment

We would like to express our sincere gratitude to everyone who contributed to the development and implementation of the College Recommendation System. Without their dedication, expertise, and support, this project would not have been possible. We extend our thanks to the following individuals and groups:

**[Saptrishi Goswami]**: For his guidance, valuable insights, and constructive feedback throughout the development process.

**[Avinash Jha]**: For his hard work, collaboration, and commitment to delivering a high-quality recommendation system.

**[Ajit Kumar Singh]**: For his hard work, collaboration, and providing technical support for this project.

**[Md Kausar]**: For his hard work, collaboration, and providing the necessary resources and support for this project.